

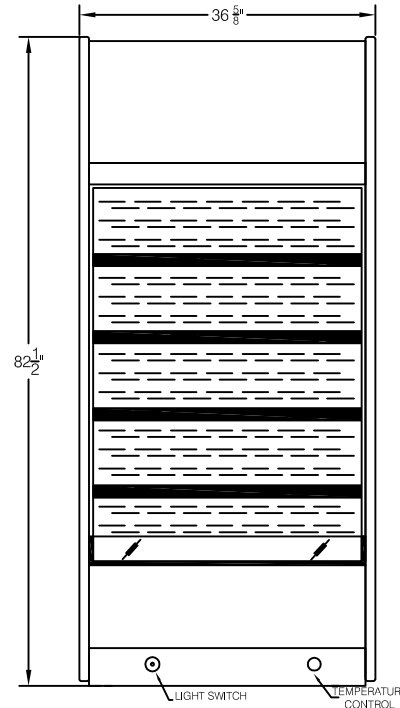
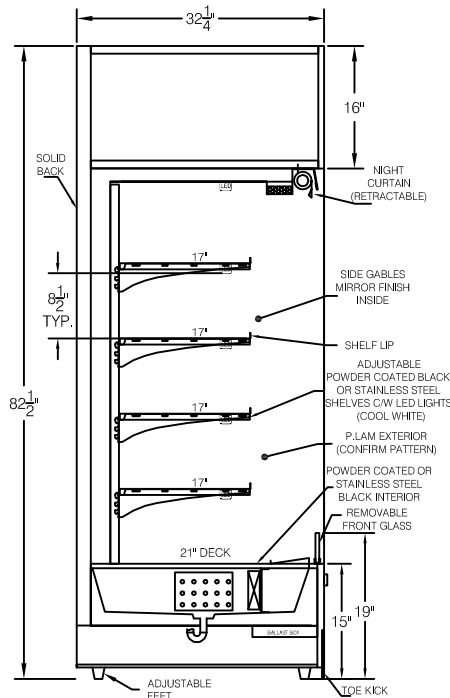
PROJECT:

QTY:

ITEM No.

WC3682R

REFRIGERATED SELF-SERVICE WALL DISPLAY CASE (REMOTE)



FRONT VIEW

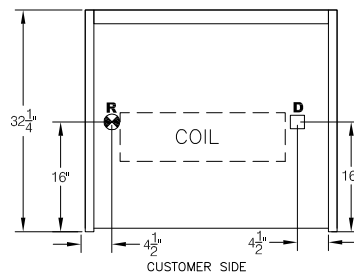
*** ALL DIMENSIONS ARE ± 1/8"**

- | Options | |
|---------|---------------------------------------|
| 1. | Stainless steel interior and exterior |
| 2. | Casters |
| 3. | LED top signage |
| 4. | Rear loading hinge door(s) |
| 5. | Stainless steel shelves |
| 6. | Security panels with lock |

* PICTURE FOR REFERENCE ONLY



PLAN VIEW



- IMPORTANT NOTE**
1. Floor drain required
 2. DISPLAY CASE MUST NOT BE LOCATED IN DIRECT SUNLIGHT OR NEAR SOURCES OF AIR FLOW INCLUDING DOORS, WINDOWS AND VENTILATION SYSTEMS.

SPECIFICATIONS						
DIMENSIONS	WC3682 R	MODEL No.	MODEL No.	MODEL No.	MODEL No.	MODEL No.
Length (in)	36.63"	L	L	L	L	L
Depth (in)	32.25"	D	D	D	D	D
Height (in)	82.5"	H	H	H	H	H
ELECTRICAL						
Voltage	120	120	120	120	120	120
Amperes (Compressor and Light)	2.0	Amps.	Amps.	Amps.	Amps.	Amps.
Amperes (Elect. Cond. Pan needs separate circuit)	-	Amps.	Amps.	Amps.	Amps.	Amps.
Power Cord	8 ft.	8 ft.	8 ft.	8 ft.	8 ft.	8 ft.

NEMA Receptacle Configurations	NOTES
FOR TOP LED PANEL LIGHT & FANS 	All Specifications subject to change without notice. This Design is the property of QBD Modular Systems Inc. No copies or reproductions are permitted without the written permission of QBD Modular Systems Inc. ** All units are designed to operate under normal store conditions that ambient temperature and relative humidity do not exceed 27°C(80°F) and 60% R.H respectively, and maintain the temperature between 35°F to 40°F. **Condensation on glass may occur in Hot / Humid conditions. QBD is not responsible for any consequential damages as a result. **QBD WARRANTY DOES NOT INCLUDE PRODUCT LOSS OR CONSEQUENTIAL DAMAGES HOWEVER CAUSED. Please review detailed warranty statement prior to purchase.

Manufacturers of food service displays



QBD MODULAR SYSTEMS INC. TEL: (905) 459-0709
 31 BRAMSTEELE ROAD, BRAMPTON, ONTARIO, CANADA L6W 3K6 FAX: (905) 459-1478
WWW.QBD.COM info@qbd.com

1-800-663-3005

DR. BY: Hesam

DATE: 06/23/ 16

FILE: WC3682R