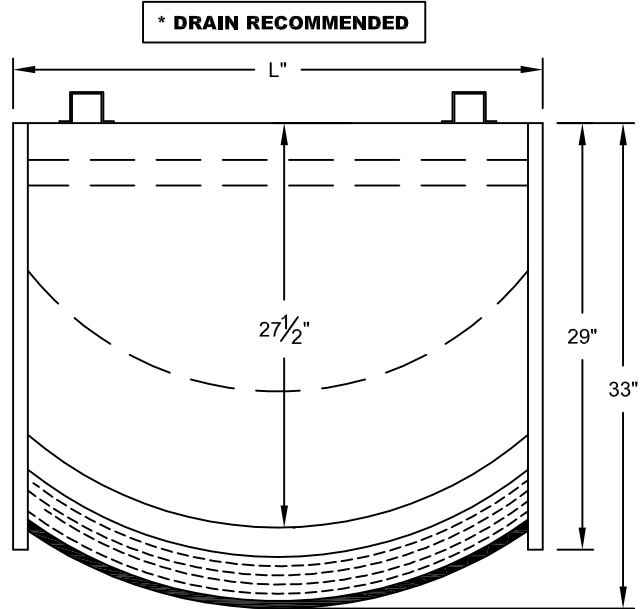
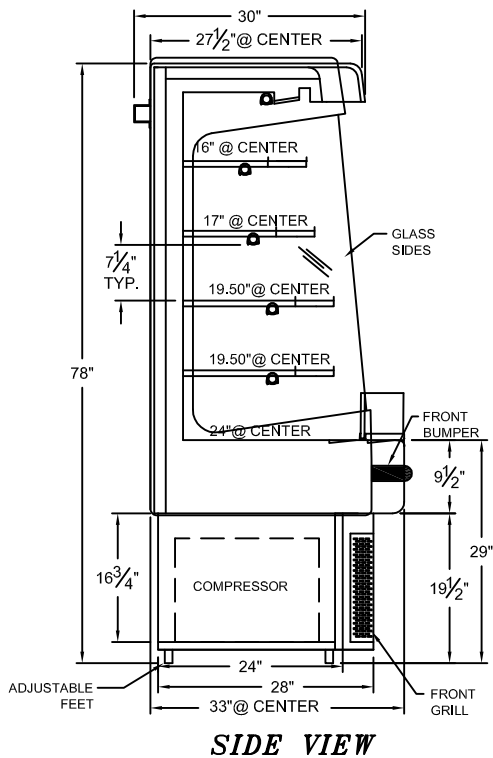


PROJECT:	QTY:	ITEM No.
----------	------	----------

# WCXX78-CURVED-G

## REFRIGERATED CURVED WALL CASE



\* ALL DIMENSIONS ARE ± 1/8"



*Manufacturers of food service displays*

DISPLAY CASE MUST NOT BE LOCATED IN DIRECT SUNLIGHT OR NEAR SOURCES OF AIR FLOW INCLUDING DOORS, WINDOWS AND VENTILATION SYSTEMS.

\* DISPLAY CASE MUST HAVE 6" CLEAR SPACE ON ALL SIDES INCLUDING TOP.

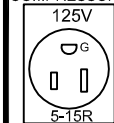
### SPECIFICATIONS

DIMENSIONS	WC 3678-C	WC 4878-C	WC 6078-C	WC 7278-C
Length (in)	36"	48"	60"	72"
Depth (in)	33"	33"	33"	33"
Height (in)	78"	78"	78"	78"
ELECTRICAL				
Voltage	120	120 / 208/240	120	208/240
Amperes (Compressor and Light)	9.5	8.5	9.5	9.5
Amperes (Elect. Cond. Pan needs separate circuit)	8.3	8.3	8.3	4.8
Power Cord	8 ft.	8 ft.	8 ft.	8 ft.

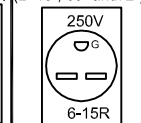
NEMA Receptacle Configurations

#### TWO SEPARATE POWER SUPPLY REQUIRED

FOR ELECT. COND. PAN and L=36" COMPRESSOR



FOR COMPRESSOR & LIGHTS (L=48", 60" and 72")



#### NOTES

All Specifications subject to change without notice.

This Design is the property of QBD Modular Systems Inc. No copies or reproductions are permitted without the written permission of QBD Modular Systems Inc.

\*\* All units are designed to operate under normal store conditions of 24°C (75°F) with 50% relative humidity, and maintain the temp. between 35°F to 40°F.

\*\*Condensation on glass may occur in Hot / Humid conditions. QBD is not responsible for any consequential damages as a result.

\*\*QBD WARRANTY DOES NOT INCLUDE PRODUCT LOSS OR CONSEQUENTIAL DAMAGES HOWEVER CAUSED. Please review detailed warranty statement prior to purchase.



**QBD MODULAR SYSTEMS INC.**

31 BRAMSTEELE ROAD, BRAMPTON, ONTARIO, CANADA L6W 3K6

[WWW.QBD.COM](http://WWW.QBD.COM)

1-800-663-3005

TEL: (905) 459-0709

FAX: (905) 459-1478

[info@qbd.com](mailto:info@qbd.com)

DR. BY: **Hesam**

DATE: **18/11/16**

FILE: **WCXX78-CURVED-G**